



# 2024

STRATEGIC PLAN  
ANNUAL REPORT

SAINT LOUIS UNIVERSITY™  
SCHOOL OF MEDICINE



## VISION

To pursue excellence in education, research, clinical care, and improve the health of our community through professional development, collaboration and social justice, grounded in our Jesuit values.

---

CURA PERSONALIS	Care for the whole person, rooted in the Ignatian principle that God created us to do good in the world, and embracing the humanity in all
SCHOLARSHIP	Delivering transformative education and creating new knowledge
DISCOVERY	Research, scientific inquiry, and the application of that knowledge
EQUITY	Striving for justice, fairness, and diversity in our education, research, and service to the community
COLLABORATION	Partnership across Saint Louis University, SSM Health, and the wider community



## TABLE OF CONTENTS

EDUCATION - 4

RESEARCH - 10

CLINICAL CARE - 16

MISSION - 20

LEADERSHIP &  
ORGANIZATION - 24

IMAGE & REPUTATION - 32

I am pleased to present the **2024 Annual Report of the Saint Louis University School of Medicine**. This report details our collective achievements and progress over the past year, anchored by our commitment to excellence in medical education, research, patient care, and community engagement, and guided by our 5-year strategic plan.

2024 was a year of excellence and growth:

**Educational Excellence:** SLU medical education is highly competitive, with excellent student outcomes evidenced by high student satisfaction, academic, and Match success. Our seven SOM Masters and PhD programs have grown to a record number of students.

**Research and Scholarship:** Faculty and students are conducting basic, clinical, and translational research and scholarship with regional, national, and international impact.

**Clinical Care:** The SLUCare academic medical practice has grown in size and scope, serving a widening community while training the next generation of physicians.

**Faculty Growth and Development:** We have recruited faculty and visionary leaders, supporting them with the Center for Educator Development, Advancement, and Research.

We are excited about the year ahead. We will continue to pursue our mission and goals with a focus on our key priorities:

**Transforming our medical school** into a premier site for innovative, state-of-the-art medical and health education that graduates exceptional clinicians, including providing the facilities to enable that.

**Enabling students from all backgrounds** to receive an excellent medical education, training to serve our community, region, and beyond.

**Enhancing biomedical research**, driving advancements in healthcare and biomedical discoveries.

**Recruiting and supporting top-tier department chairs and visionary faculty** engaged in innovative medical education, research, and clinical care.

I hope you will enjoy this School of Medicine year in review.

Sincerely,



**CHRISTINE K. JACOBS, M.D., FAAFP**

Vice President of Medical Affairs and Dean of the School of Medicine



# CHARTING A **VISIONARY PATH FORWARD**

Under the leadership of Dean Christine Jacobs M.D., the School of Medicine has charted an ambitious and bold strategic plan that focuses on our goals for transformative advancement in education and research.

The School of Medicine will be:

An **academically excellent**, innovative, and engaging environment for learners and faculty, grounded in scientific method and commitment and service to others

Home of **research excellence** in clinical, translational, and basic science

A **premier** academic healthcare destination

A place where everyone feels **welcomed, respected, and supported**

A community-responsive leader

Achieving education, research, and clinical service missions with a **supportive culture and effective leadership**

Rising in **national reputation**, known as a national leader in medical education and scholarship





SSMHealth | Saint Louis University Hospital

EMERGENCY

# ACADEMIC EXCELLENCE

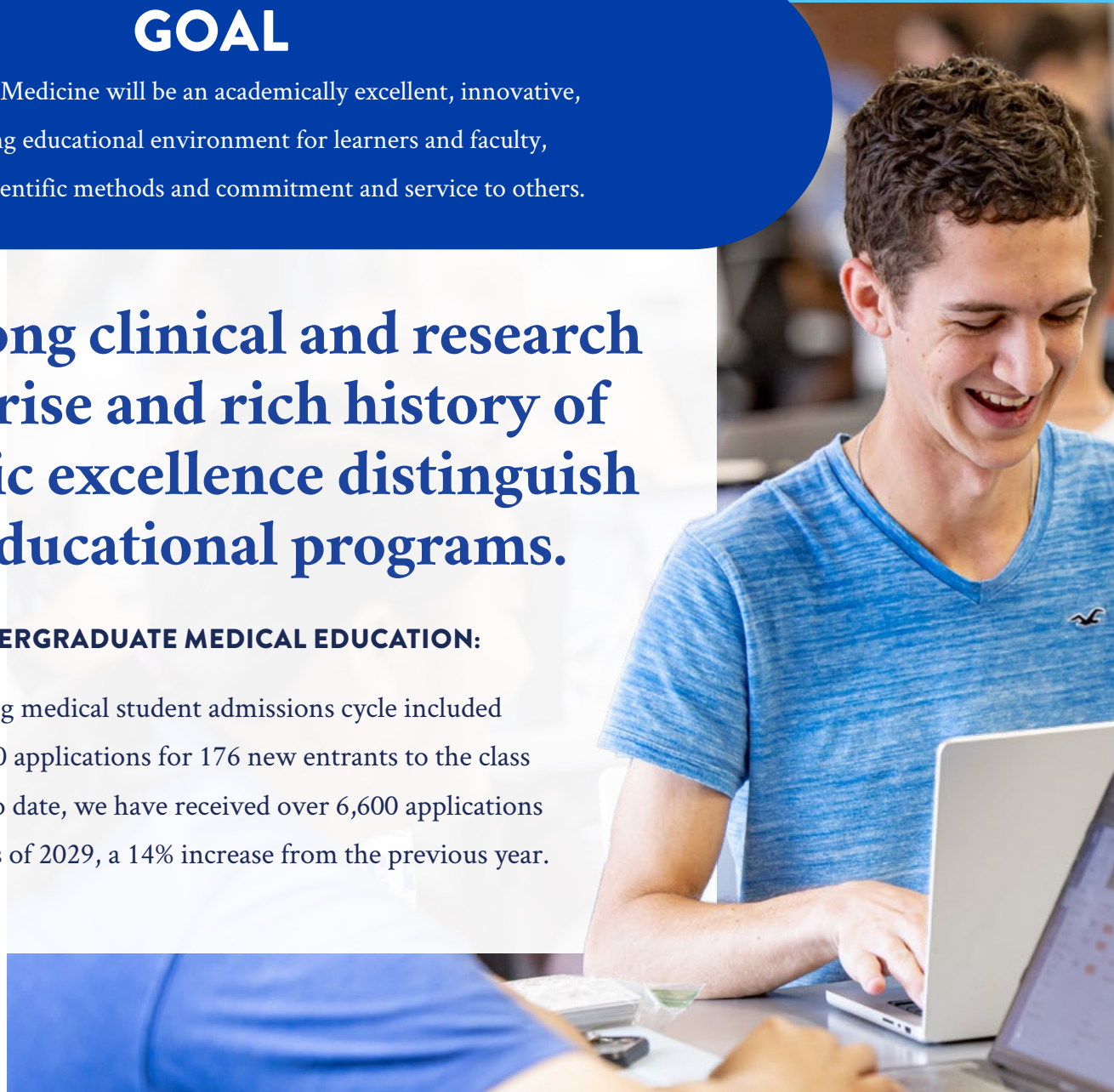
## GOAL

SLU School of Medicine will be an academically excellent, innovative, and engaging educational environment for learners and faculty, grounded in scientific methods and commitment and service to others.

**Our strong clinical and research enterprise and rich history of academic excellence distinguish our educational programs.**


### **UNDERGRADUATE MEDICAL EDUCATION:**

A strong medical student admissions cycle included over 5,800 applications for 176 new entrants to the class of 2028. To date, we have received over 6,600 applications for the class of 2029, a 14% increase from the previous year.



## SLU MEDICAL STUDENTS ARE HAPPY AND SUPPORTED

- High (85%) overall student satisfaction.
- Students are provided **comprehensive advising services** and personalized guidance and support throughout their academic journey.
- We welcomed additional **staff within the Office of Curricular Affairs and Financial Services**.
- **The Wellness Committee** sends out a **wellness mailer** that highlights available **behavioral health services** to support the mental and emotional well-being of our community.
- A shift in curriculum towards active learning and an 18-month preclinical curriculum with increased clinical training time is better **preparing students for their future careers**.
- Students in the Class of 2026 maintained a Step 1 pass rate well above the national average (2023 - 97% pass rate, national 92%).
- 99% of all SLU SOM Class of 2024 students matched, with 97.2% matching in the first round of the NRMP Match Process.



“By gaining clinical experience early, I find more meaning in my studies, connecting the concepts I am learning directly to patient care.” Zaid Khaja (Med’27)

# 2024 BY THE NUMBERS

## GRADUATE STUDENT EDUCATION:

CLASS OF 2028



55%  
ARE MALE



45%  
ARE FEMALE

176  
STUDENTS

5,809 APPLICATIONS

OVER 400 PHD, MASTERS, AND POST-BACCALAUREATE STUDENTS ACROSS MULTIPLE DISCIPLINES INCLUDING BIOMEDICAL SCIENCES, FAMILY MEDICAL THERAPY, HEALTH DATA SCIENCE, AND ANATOMY.

BIOMEDICAL SCIENCES CORE PROGRAM: 7 FIRST YEAR PHD

BIOCHEMISTRY & MOLECULAR BIOLOGY: 15 PHD, 2 MD/PHD

MOLECULAR MICROBIOLOGY & IMMUNOLOGY: 11 PHD, 5 MD/PHD

PHARMACOLOGY & PHYSIOLOGY: 12 PHD

MEDICAL FAMILY THERAPY: 15 MA, 11 PHD

HEALTH DATA SCIENCE: 285 MS

HEALTH OUTCOMES RESEARCH: 10 PHD, 2 MD/PHD

ANATOMY: 13 MS, 2 PHD

MEDICAL ANATOMY & PHYSIOLOGY POST-BACCALAUREATE PROGRAM: 14



3.89  
UNDERGRADUATE  
OVERALL GPA

513 AVERAGE MCAT

63%

STUDENTS ARE FROM  
CENTRAL U.S.A.

46%

STUDENTS ARE FROM  
MISSOURI OR ILLINOIS





## GRADUATE MEDICAL EDUCATION:

SSM HEALTH/SAINT LOUIS UNIVERSITY RESIDENCY PROGRAMS TRAINED **686** RESIDENTS AND FELLOWS FROM JULY 1, 2023 THROUGH JUNE 20, 2024

THE GRADUATE MEDICAL EDUCATION (GME) STRATEGIC PLANNING SUB-COMMITTEE OF THE GME COMMITTEE APPROVED **7** PROGRAM INITIATION REQUESTS AND **11** NEW POSITION REQUESTS.

**95%** 7-YEAR BOARD CERTIFICATION PASS RATE

**95%** OF TRAINEES PARTICIPATED IN SCHOLARLY ACTIVITY.

## CONTINUING EDUCATION HIGHLIGHTS

The Continuing Medical Education (CME) office serves physicians and non-physicians regionally and nationally.

- **Hosted 56 one-time annual Conferences/Symposiums** and faculty development.
- **Held 65 regularly scheduled Series** (Grand Rounds, M&M, Journal Club, Case Conference, Faculty Development).
- **Launched 12 recorded** programs available on Advancing Medicine (ON24), our virtual platform for recorded CME materials and courses.

# SPOTLIGHT

## SLU PRACTICAL ANATOMY AND SURGICAL EDUCATION (PASE): A CORNERSTONE OF EXCELLENCE

Saint Louis University's Practical Anatomy and Surgical Education's hands-on cadaver workshops and surgical training provide realistic learning experiences for health care professionals. We offer courses to physicians, residents, fellows, U.S. military personnel, advanced practice providers, nurses, therapists, and first responders. In 2024, PASE had 567 workshop participants and 164 faculty participants.

**Advancing Medicine CME**

Advancing Medicine CME is an online continuing medical education program designed to explore innovations, share new procedures, treatments, research studies, clinical trials, and other advancements to improve patient care.

OPT IN FOR COMMUNICATIONS

<p><b>Suicide in America: 21st Century Gender, Race, and Age Effects</b></p> <p>45.00</p> <p><i>Suicide in America in the 21st Century: Gender, Race, and Age Effects</i> Erick Messias, MD, MPH, PhD Professor and Chair, Department of Psychiatry and...</p>	<p><b>Emerging Methamphetamine Epidemic: Where Do We Go From Here?</b></p> <p>20.00-20.00</p> <p><i>Emerging Methamphetamine Epidemic: Where Do We Go From Here?</i></p>	<p><b>Acute Liver Failure: Overview and Management</b></p> <p>20.00-20.00</p> <p><i>Acute Liver Failure Overview and Management</i></p>	<p><b>Establishing a Theranostics Program: Practical Considerations</b></p> <p>30.00</p> <p><i>Establishing a Theranostics Program - Practical Considerations</i> Dr. Mother Osman lays the historical background and evolution of theranostics in nuclear medicine and covers standard treatment from clinical trials to routine...</p>	<p><b>Building a Wellbeing Program in Academic Medicine</b></p> <p>42.00</p> <p><i>Building a Wellbeing Program in Academic Medicine</i> Professor Erick Messias, MD, MPH, PhD, will take an in-depth look at building well-being programs in academic medicine by focusing in on healthcare burnout...</p>
--	--	---	--	---



# SPOTLIGHT

## SLU SCHOOL OF MEDICINE VALUES CONNECTIONS ACROSS THE NATION, AND IN OUR REGION, TRAINING PHYSICIANS TO SERVE OUR COMMUNITY

As a leader in training outstanding clinicians, we are committed to increasing healthcare access by expanding our community of skilled medical professionals both regionally and beyond. Over 40% of the entering class of 2028 hails from Missouri or Illinois. Twenty three graduates from the Class of 2024 matched into SSM-SLU residencies, highlighting our medical students' appreciation of the high quality of our graduate medical education.



# SPOTLIGHT

## AREAS OF DISTINCTION

SLU School of Medicine offers medical students options to augment their education with pathways that align with their interests and passions. These programs include longitudinal academic, clinical, research, personal growth and/or community engagement experiences.

Student interest in these pathways is increasing, particularly in Urban Community Health, with 50 students enrolled. The Medical Spanish distinction is thriving and graduated its first students in 2024.

In 2024, 52 medical students graduated with Distinction. Global Health (5), Medical Education (16), Research (16), Urban Community Health (6), and Wellness (9).

## CURRICULUM HIGHLIGHT - INTERPROFESSIONAL EDUCATION

- M1 students participated in the Interprofessional Team Seminar that included over 450 students from the ABSN, AMSN, DPT, MOT and PA programs at SLU along with PharmD students from the University of Health Sciences and Pharmacy in St. Louis.
- The School of Medicine joined with the Doisy College of Health Sciences, Trudy Busch Valentine School of Nursing, School of Social Work and College for Public Health and Social Justice in the development of SLU's new innovative Microcredential in Interprofessional Collaborative, the first graduate-level competency-based microcredential in SLU history.



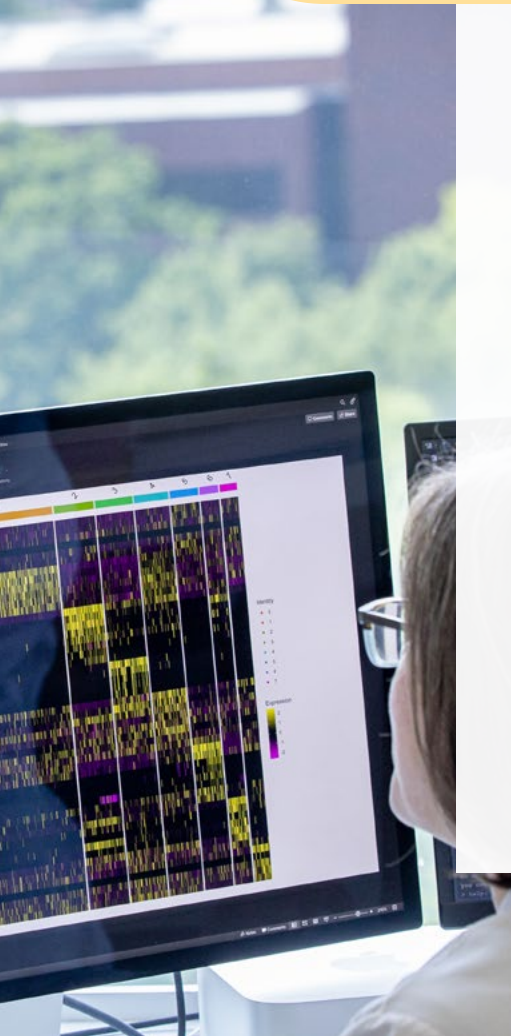
# RESEARCH & INNOVATION

## GOAL

SLU School of Medicine will be the home of research excellence in clinical, translational and basic science, creating transformative knowledge that will strengthen our academic mission and positively impact the health and well-being of the population.

## Advancing research excellence and innovation by promoting inquiry and supporting researchers

Dedicated faculty, researchers, and students work collaboratively to push the boundaries of medical science, exploring new frontiers in health and medicine, aided by our commitment to improving our research infrastructure, operations, and to support our researchers.





## LAUNCHED THE GRANTS OPERATIONS (GO) CENTER

The Grants Operation (GO) Center unifies key pre and post-award staff into a high functioning team to support SLU faculty applying for federal, state, and foundation grants. The GO Center has improved service delivery for the School of Medicine researchers, allowing them to focus more fully on research activities by ensuring efficiency and compliance.



**Adriana Montano, PhD**  
Vice Dean for Research



**Sandra Cornell, MBA, MHA**  
Director,  
Research Planning & Resources SOM



**Tara Maulood, MBA**  
Project Manager

## Clinical Trials Office (CTO)



**Noah Hillman, MD**  
Associate Dean of  
Clinical Research



**Matt Alday**  
Clinical Research  
Operations Officer



**Katya Hill**  
Director CTO



**Marisol Tahan**  
Clinical Education  
Manager



**Amy Reeves**  
Interim Associate  
Director of CTO

Finance Team

Education Team

CTMS Team

## SOM Grants Operations (GO) Center



**Matt Alday**  
Interim AVP SOM  
Research Administration



**Stephen Schmidt**  
Interim Executive Director  
SOM GO Center



**Rob Kornosky**  
Assistant Director  
Pre Award



**Jacquie Roy**  
Assistant Director  
Post Award

SOM Pre-Award  
Specialists

SOM Post-Award  
Specialists

## STRENGTHENING OUR RESEARCH CORES

The Research Planning Committee reviewed the SOM Research Cores and developed a Sustainable Financial Model for the Cores which includes cost/benefit analysis, invoicing core services on grant proposals, and School of Medicine support. In response to the review, one notable change was increased access of faculty and residents to AHEAD Biostatistics Core services.

### SLU School of Medicine Research Cores

- Biostatistics Core, within the Advanced HEAlth Data (AHEAD) Institute
- Animal Research Facility
- Genomics and Bioinformatics Core Facility
- Advanced Spatial Biology and Research Histology Facility
- Light Electron Microscopy Laboratory

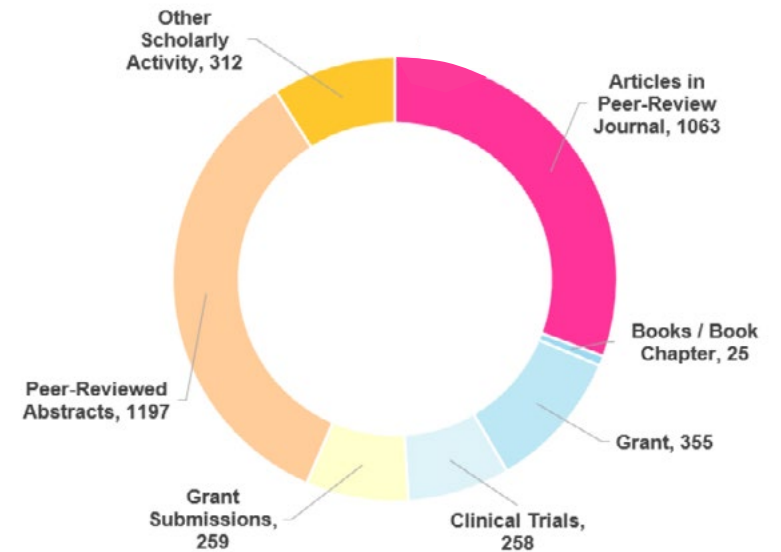
## FACULTY INVESTIGATORS SHARED IMPACTFUL RESEARCH

Faculty investigators showcased impactful research to SSM Regional leaders highlighting basic, clinical, translational, and data science.

**New Faculty Investigators** were hired in the Departments of Biochemistry and Molecular Biology, Molecular Microbiology and Immunology, and Pharmacology and Physiology to expand basic research.

## FACULTY PUBLICATIONS

Over 3,400 published items  
More than 420 faculty



## INTERNAL AWARDS PROGRAM

SOM ADMINISTERED PRESIDENT'S RESEARCH FUND

SOM RESEARCH OPPORTUNITY FUND

SOM GRANT REVIEW SERVICES

SOM DOUBLE DISCOVERY

SLU INSTITUTE FOR DRUG AND BIOTHERAPEUTIC INNOVATION (IDBI) VOUCHERS

AI IN MEDICINE SEED GRANT

TOTAL \$453,640

## BY THE NUMBERS

THE NUMBER OF INDUSTRY SPONSORED CLINICAL TRIALS INCREASED BY **16.4%** FROM 2023 TO 2024

HIGHEST REVENUE IN INDUSTRY SPONSORED CLINICAL TRIALS IN **12** YEARS

DOUBLED THE REVENUE FROM INDUSTRY-SPONSORED CLINICAL TRIALS IN JUST **3** YEARS

## STUDENTS ARE EXCITED ABOUT RESEARCH

**60** FIRST YEAR MEDICAL STUDENTS PARTICIPATED IN RESEARCH ELECTIVES

**57** STUDENTS PARTICIPATED IN CLINICAL RESEARCH ELECTIVES, INCLUDING **36** CLERKSHIP ELECTIVES AND **21** POST-CLERKSHIP ELECTIVES

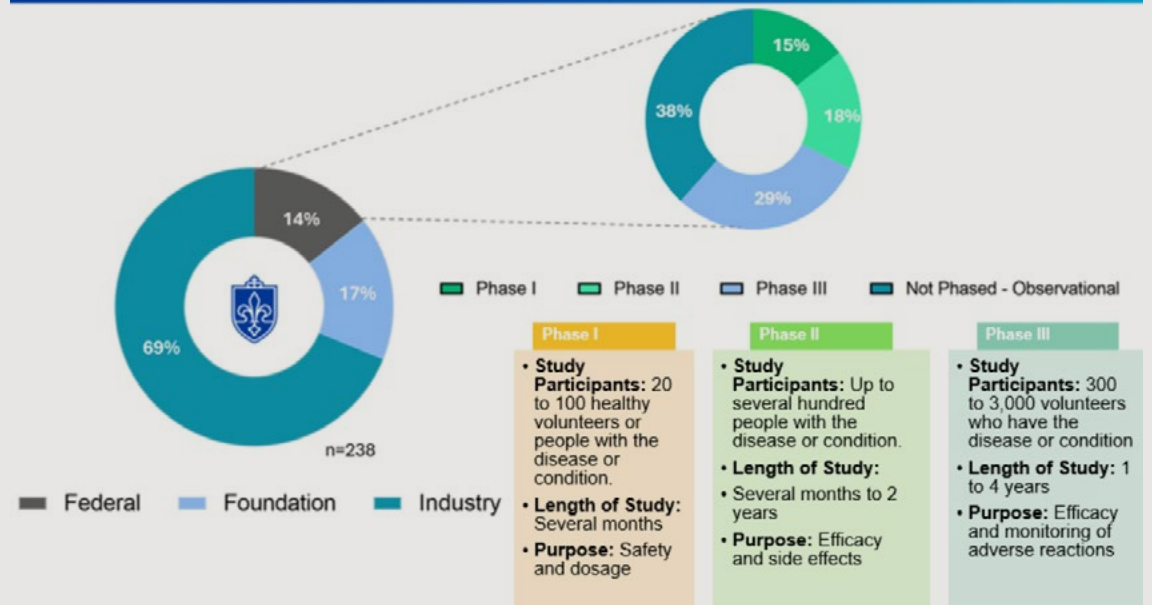
**34** PRE-CLERKSHIP MEDICAL STUDENTS PARTICIPATED IN THE SUMMER RESEARCH FELLOWSHIP PROGRAM

## RESEARCH DISTINCTION

MEDICAL STUDENTS IN THE RESEARCH DISTINCTION EXPLORE NEW IDEAS, CHALLENGE ASSUMPTIONS, AND INNOVATE BY MAKING A CONSIDERABLE COMMITMENT TO PROJECTS THROUGHOUT THE YEARS OF MEDICAL SCHOOL.

**16** STUDENTS IN THE CLASS OF 2024 GRADUATED WITH DISTINCTION IN RESEARCH, WHICH HAS TRIPLED IN THE LAST THREE YEARS.

## Portfolio of Clinical Trials at SLU



## SOM Clinical Trials 13-Year Clinical Trial Revenue Trend



# CLINICAL CARE

## GOAL

SLU School of Medicine will be a premier academic health-care destination for the St. Louis region and the SSM referral network.

### Emerging as a Premier Academic Healthcare Destination through Faculty Expansion and Initiatives

SLU School of Medicine and SSM Health are partnering to become a premier academic healthcare destination for the St. Louis region. 2024 was a year of building our academic platform for our clinical, research, and educational needs, and growing our faculty.







## EXPANDING OUR ACADEMIC PLATFORMS

The SSM Health SLUCare academic platform grew in 2024 with the addition of inpatient beds in the Bordley Tower at SSM Health SLU Hospital and the elevation of SSM Health St. Mary's Hospital to an academic integrated hospital. This growth will increase patient access to academic healthcare as well as medical training opportunities.

## FACULTY COMMUNITY IS THRIVING AND GROWING

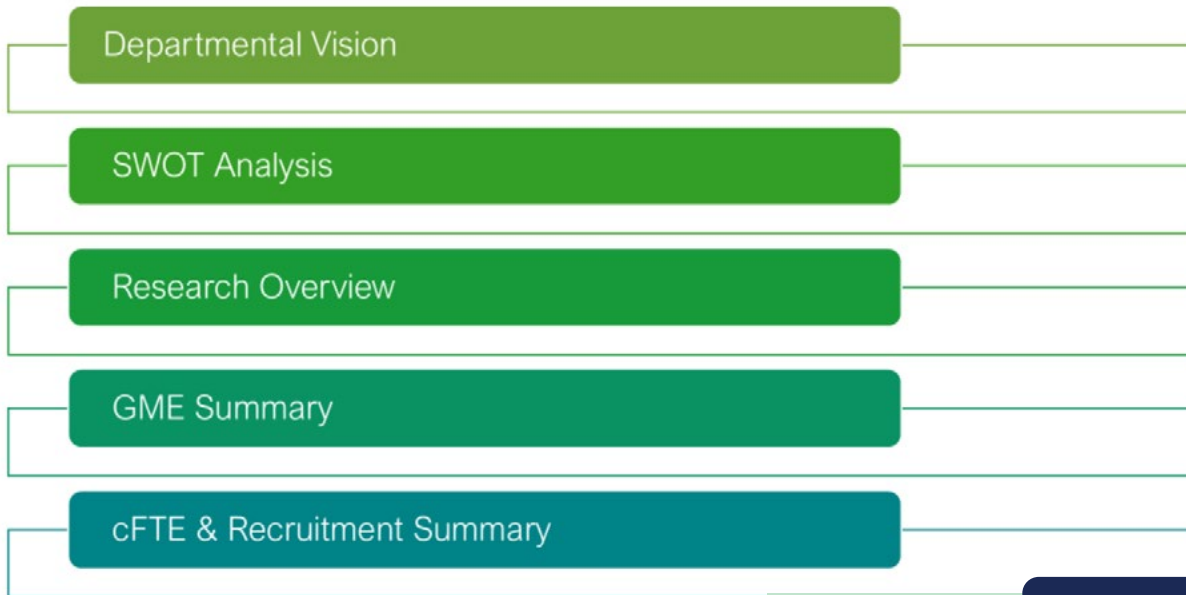
The School's **collaboration with SSM Health** has led to significant growth in the SLUCare faculty practice, with **over 178 new physician faculty** in 2024, supporting our clinical, educational, and research missions.

- We are committed to professional development for all our faculty. 86% of our faculty are actively engaging in development opportunities.
- School of Medicine faculty are leaders in SSM Clinical Program Platforms, improving healthcare across the SSM Healthcare 4-state region.

# STRENGTHENING COLLABORATION AND ALIGNMENT BETWEEN SLU SCHOOL OF MEDICINE AND SLUCARE PHYSICIAN GROUP

SSM Health and SLU School of Medicine worked together in 2024 to create a 5-year Faculty Development Plan.

Each clinical department completed a SWOT analysis, a research overview, a Graduate Medical Education assessment, and a recruitment plan. This plan is critical to growing the academic practice and provides a long range vision for recruitment, education, and faculty practice needs.



## OTHER INITIATIVES

Clinical research is central to the missions of both the School of Medicine and to SSM Health, which formalized their collaboration through a Research Services Agreement in 2024. This partnership will benefit patients by providing opportunities for academic and community-based clinical trials.

**SSM Health Cardinal Glennon Children's Medical Center ranked by the 2024-2025 U.S. News and World Report** as one of the top 50 children's hospitals in the nation in 7 clinical specialties, reaffirming our pediatricians' dedication to our community and its children.

**No. 48** in Cancer Care

**No. 32** in Cardiology & Heart Surgery

**No. 19** in Gastroenterology

**No. 46** in Neonatology

**No. 27** in Nephrology

**No. 27** in Pulmonology & Lung Surgery

**No. 48** in Urology



# SPOTLIGHT

## JOINT INITIATIVE: SLU PSYCHIATRY & SSM HEALTH

Under the leadership of Erick Messias, M.D., Ph.D, department chair and professor of psychiatry and behavioral neuroscience, a new Behavioral Health Urgent Care and Long-Acting Injection Clinic featuring 11 patient examination rooms has opened at SSM Health SLU Hospital. Dedicated to delivering safe, high-quality, and affordable mental health services to our community, the new SSM Health Behavioral Urgent Care is a walk-in clinic that provides specialized alternatives to emergency room care for adults facing a mental health crisis.



# 2024 STRATEGIC METRICS

Metric description / stat	Target	2023	2024
<b>EDUCATION</b>			
<i>SLU SOM will be an academically excellent, innovative, and engaging educational environment for learners and faculty, grounded in scientific method and commitment and service to others.</i>			
<b>Undergraduate Medical Education</b>			
Admit medical student with regional connection	>40% of entering class from Missouri or Illinois	73% from Central US; 60% from Missouri/Illinois	63% from Central US; 47% Missouri/Illinois
Match rate % of students accepted into residencies (1st Match)	1st Match - at or higher than national average; <u>and</u> individualized plan for all students not matched in 1st match	90.3%	97.2%
Step 1 pass % of students who passed Step 1	2% or greater points above national average	97%	94%
Step 2 pass % of students who passed Step 2 and average score of students taking Step 2	At or above national average score and average pass rate	98%	99%
<b>Graduate Medical Education</b>			
ACGME accreditation % compliance	100%	100%	100%
7 year board certification pass rate 7-yr rolling vs. national	at or above national mean	96%	95%
<b>Graduate Programs (PhD, Masters, Certificate)</b>			
6 year graduation rate - PhD completed within 6 yrs	100%	95%	95%
<b>Research</b>			
<i>SLU SOM will be the home of research excellence in clinical, translational, and basic science, creating transformative knowledge that will strengthen our academic mission and positively impact the health and well-being of the population.</i>			
NIH expenditures	5% increase	\$19,369,315.00	\$17,561,289.00
Non-NIH research expenditures	5% increase	\$15,784,391.00	\$15,155,066.00
Clinical trials revenue (Industry)	10% increase	\$4,296,320.00	\$4,504,696.00
# Clinical trials (Industry)	10% increase	128	149
# Clinical trials (non-Industry)	10% increase	82	82
<b>Clinical Care</b>			
<i>SLU SOM will be a premier academic health care destination for the St. Louis region and the SSM referral network.</i>			
Number of SLUCare faculty physicians (as of 12/31)	5% increase year over year	636	738



Metric description / stat	Target	2023	2024
<b>Mission</b>			
<i>In keeping with our Ignatian Mission in Medicine, SLU SOM will be a place where everyone is welcomed, respected, and supported, so that we may be a community-responsive leader, working in partnership to reduce health inequities and improve the health and well-being of the St Louis region.</i>			
SLU GLINT survey: 1. Everyone at Saint Louis University has an equitable opportunity to succeed. 2. Leaders at Saint Louis University value different perspectives.	Percent Favorable: 75% agreement by all participants for these metrics	1. 47% 2. 62%	1. 47% favorable; 31% neutral 2. 55% favorable; 29% neutral
Participants in Urban Community Health track - sustainable growth - # of M1 and M2 students in UCH track	Up to 20 new students/yr	39 medical students	50 medical students (14 from M1 Class)
<b>Leadership and Organization</b>			
<i>SLU SOM will achieve its educational, research, clinical and service missions with a supportive culture and effective leadership, while being an excellent steward of its people and resources.</i>			
White coat membership (\$2500 donors)	500 White Coat Society members	159	194
Faculty participating in leadership training - % of faculty with faculty development reported on annual review	100%	85%	86%
SOM faculty retention - % faculty retention in prior year	96% retention rate or better for calendar year; better than national average faculty retention.	96%	96%
SOM leadership by permanent chairs	15 of 18 chairs permanent	12 permanent	15 permanent
<b>Image and Reputation</b>			
<i>SLU SOM will rise in national reputation, be known as a leader in medical education and scholarship and be a provider and employer of choice.</i>			
Primary Care	Top 50 USNWR ranking	Rank 56	Tier 1 Primary Care (2024 USNWR)
Social Media	1.) New Followers- 15% increase across platforms 2.) Engagement Rate-7% increase across platforms	New Followers - 1,300 Engagement Rate 4.5%	New Followers - 2,720 Engagement Rate: 4.7%
SOM Website Growth	1.) First time users - 5% increase 2.) Engagement Rate - maintain industry standard of 58.6% 3.) Number of Visits - 8% increase	Engagement Rate: 59%	Engagement Rate: 54.9% Number of Visits/Page Views: 1.3 million

## Edward A. Doisy Department of Biochemistry and Microbiology Celebrates 100 Years of Scientific Excellence



# MISSION

## GOAL

SLU School of Medicine will be an inclusive place where everyone is welcomed, respected, and supported.

**Advancing our efforts towards becoming an even more inclusive School of Medicine, ensuring our commitment to people is at the heart of everything we do.**



## AMWA Region 7 Conference

Ladies First: Setting the Standard  
Saint Louis University School of Medicine



### WOMEN IN MEDICINE AND SCIENCE (WIMS)

WIMS hosted the annual Spotlight on Women in Medicine and Science Symposium (SWIMS) that attracted over 85 faculty and trainees.

### THE INTERSECTION OF MEDICINE AND SOCIAL ISSUES

In the Medicine and Society course, medical students learn about social determinants of health, trauma-informed care, and health systems guided by the SLU mission of *Cura Personalis*—care for the whole person.

### SCHOOL OF MEDICINE DEPARTMENT LIAISONS HOSTED VARIOUS INITIATIVES

Initiatives hosted by departments include:

- The **Psychology Department** hosted a Wellness/Mental Health Fair in collaboration with local St. Louis mental health organizations and provided mental health resources, wellness infographics, and opportunities to talk with representatives and volunteers. Additionally, the department presented a lecture series on cultural psychiatry, using case reports and examples from a refugee clinic.
- **Emergency Medicine** participated in a Black Men and Women in White Coats event at a local high school to answer students' questions about becoming physicians.
- The **Pharmacology and Physiology Department** demonstrated experiments at a STEM Day at a local school.
- The annual **Internal Medicine** Art Day auctioned donated art to raise money to sponsor St. Louis youth for the Little Medical School, a program that exposes kids to a medical career.
- **Orthopedic Surgery Sports Medicine** Doctors for a Day gave young women an introduction to orthopedics.

# SPOTLIGHT

## AMERICAN MEDICAL WOMEN'S ASSOCIATION (AMWA) AT SLU SCHOOL OF MEDICINE: INSPIRING WOMEN, DRIVING CHANGE

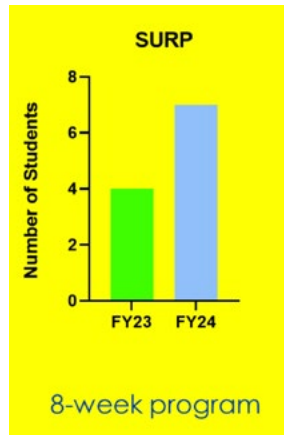
Saint Louis University hosted the 2nd annual American Medical Women's Association (AMWA) Region 7 Conference, bringing together students from 10 different institutions. Featured speakers included Dr. Toniya Singh (alumna of SLU cardiology residency) and Dr. Vanessa Garcia-Turners, alongside SLU physician panelists, who shared insights and experiences, inspiring the next generation of medical professionals.

During Orientation Week, AMWA leads organized a welcome reception at the home of Dean Jacobs. This event provided incoming medical students with the invaluable opportunity to connect with senior students and School of Medicine faculty, sharing their backgrounds, experiences of living in St. Louis, and future plans.

## EMPOWERING THE COMMUNITY THROUGH EXPANSION OF OUR PATHWAYS PROGRAMS

Saint Louis University School of Medicine has grown its **pathway programs**, engaging scholars with pipelines to medicine and science.

**Summer Undergraduate Research Program** provides students from backgrounds under-resourced in medicine with a window into careers in medicine and science. This year we hosted **7 undergraduate students from 5 universities**, providing students with research opportunities and mentorship.



Nithin Suresh-SLU, Braeden Bruggeman-University of Alabama, Reginald Tate-SLU, Jhamari Bryant-Florida A&M University, Camille Henderson-Clark Atlanta University, Nandana Abburi-SLU, Rehema Tuju-Augustana College

## COLLEGIATE SCHOOL OF MEDICINE AND BIOSCIENCE INTERNSHIP PROGRAM

The **High School Internship Program** welcomed **7 seniors** for hands-on experience across six departments and five research labs. This initiative prepares high school students for future STEM careers through career immersion.



## SUMMER SCHOLARS PROGRAM

The **Summer Scholars Program** for 10th - 12th graders was expanded to four weeks, providing participants with opportunities to explore healthcare careers through academics, research, and community service.

Engagement in the pathway programs, trainings, events, and department initiatives grew by more than 30%.

## HIGH SCHOOL MENTORSHIP

In the Doctors for Diversity elective, medical students talked with more than 70 middle and high school students about healthy eating, mental wellness, and the dangers of smoking.



**Advancing Student Participation in Research Excellence (ASPIRE)**, a new six-week program for high school seniors with a passion for medicine and research, had its inaugural cohort.

## SPOTLIGHT

Adventures in Medicine and Science (AIMS) is an outreach program of Saint Louis University that includes hands-on programs, auditorium presentations, and distance learning to bring lessons of anatomy and science to life for students across the country and the world.

**145** Distance Learning Programs

**6,016** Hands-on cadaver and dissection participants

**851** Student participants

**272** camp participants

# MISSION & PARTNERSHIPS

## GOAL

SLU School of Medicine will be a community-responsive leader, working in partnership to reduce health inequalities and improve the health and well-being of the St. Louis Region.

**Commitment to community engagement is at the core of our mission. Through our community engagement initiatives, we strive to build strong, resilient communities and improve the quality of life for those we serve.**





The SLU Mobile Health Clinic began offering the Transition Clinic in early 2024 to assist people transitioning from incarceration.

In collaboration with the St. Louis City Office of Violence Prevention and Integrated Health Network (IHN)'s Re-Link and Community Referral Coordinator teams, the Mobile Health Clinic provided **149 individuals** recently released from incarceration connections to primary care medical homes, urgent specialty care, and substance use disorder treatment.

**60 students trained** to help people transitioning from incarceration, and **40 students engaged** in work with the Transition Clinic.

### **EXPANDING MOBILE HEALTH CLINIC PARTNERSHIPS:**

- Nutrition services at the Keyway Center for Diversion and Re-entry, under the guidance of SLU Nutrition and Dietetics Faculty, funded through a SLU 1818 grant.
- Brief behavioral health and emotional support interventions in collaboration with the SLU Psychology Department.
- Behavioral health group therapy sessions at the Department of Corrections Transition Center in Saint Louis City.
- Medical support and healthcare services to individuals at the St. Patrick's Center and Peter and Paul Community Outreach.

**SLU's Interprofessional Geriatrics Clinic** utilizes the Mobile Health Clinic to visit elders at community sites, assessing key health indicators like memory loss, mobility, chronic illness, medications, family support, and frailty. This initiative enhances quality of life and health outcomes.

# SPOTLIGHT

## SERVING THE COMMUNITY & BEYOND

SLU medical students engage in community service through individual and group efforts, regular and one-time opportunities. Many participate in Interest Groups with volunteer service, while the Medical Student Government (MSG) Service Committee organizes one-time service events for all medical students.

### In 2024:

- 11 Service-specific Interest Groups.
- Students collectively performed 625+ hours of community service.
- Approximately 300 students engaged in community service.
- Students organized a Vietnamese Community Vaccine Clinic, successfully vaccinating 29 patients.





## MOBILE HEALTH INITIATIVE (MHI)

Mobile Health Initiative (MHI) is a student-run volunteer interest group at SLU School of Medicine. Pre-clerkship medical students provide services to the low-income and homeless populations of St. Louis City and those emerging from incarceration.

MHI students volunteer monthly at two locations, St. Peter and Paul Church and Restorative Justice Movement, providing free reading glasses, foot washing, and connecting people to resources in the area such as food pantries, shelters, utilities bill assistance, childcare, legal care, primary care physicians, health insurance, and identification applications.



# LEADERSHIP & ORGANIZATION

## GOAL

SLU School of Medicine will achieve its education, research, clinical, and service missions with a supportive culture and effective leadership, while being an excellent steward of its people and resources.

**Fostering a supportive culture with strategic leaders who value the well-being of our community is fundamental to our mission.**

We seek to give each member of our School of Medicine community the opportunity to thrive and to contribute to our shared goal of excellence in medical education and research. Our leadership is dedicated to cultivating an atmosphere of collaboration, respect, and continuous improvement.





## **GROWTH OF EMPLOYEE RESOURCE GROUPS (ERG)**

Building on the opportunities identified in the 2023 Staff Voice Survey, SOM employees initiated Employee Resource Groups (ERGs); the Administrative Professionals ERG and the Multicultural ERG. Both groups have seen tremendous membership growth.

## **SPOTLIGHT**

### **NEW STUDENT WORKOUT ROOM**

Conveniently situated on the School of Medicine Campus, two new fitness areas for students are located on the lower levels of Schwitalla Hall and the Caroline Building, across from the student locker rooms. The fitness room is equipped with treadmills, stationary bikes, a functional weight training machine, free weights, two benches, and recreational equipment. The yoga room provides a place to incorporate mindfulness and flexibility into a holistic well-being routine.

## PRIORITIZING WELL-BEING: SSM-SLUCARE JOINT WELLNESS ACTIVITIES

SLU School of Medicine and SSM Health place a strong emphasis on the well-being of our faculty, students, and the community. By integrating resources and initiatives, we strengthen our efforts to foster a healthy and thriving environment.

- **SLUCare 4 Self & Others Joint Task Force** assessed faculty and staff needs with measures of well-being, depression, anxiety, and work meaning. In response to the assessment, **Care for Caregivers**, a comprehensive support system that provides peer support, group support, tools, and resources, was launched in 2024.
- **Schwartz Rounds** creates a supportive ministry-based culture, addressing the emotional and social struggles faced by those working in healthcare. In 2024, more than 230 people attended, providing overwhelmingly positive feedback. Participants surveyed indicated:
  - Schwartz Rounds gave them an opportunity to reflect on their well-being. **86% strongly agreed**
  - The sessions helped them reconnect with their sense of purpose. **78% strongly agreed**
  - Attending Schwartz Rounds made them feel like their organization cares about their well-being **97% agreed**
- **HeartMath** is an individual-based app that emphasizes the importance of self-regulation through breathing and biofeedback.

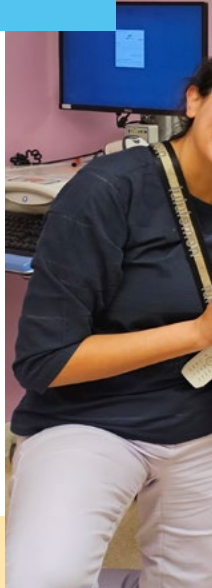


**Care for Caregivers**  
a comprehensive support system.

- 1:1 Peer support
- Group support\*
- Tools and resources\*\*
- Respond and recover

\*Including Schwartz Rounds. \*\*EAP, Lavender Cart, Rejuvenation Room

SSMHealth.





## RESOURCING OUR STRATEGIC FUNDING PRIORITIES

As we train excellent physicians and scientists, we are committed to raising funds for key areas that will enhance our impact.

- A new **Health Education Center**
- **Opportunity Scholarships**
- **Research**
- **Visionary leadership** through endowed chairs



## CELEBRATING THE APPOINTMENT OF PERMANENT CHAIRS & ENDOWED FACULTY

The leadership and expertise of our newest permanent chairs will be instrumental in guiding our academic and clinical programs. Their distinguished careers and commitment to excellence inspire and elevate our community, driving innovation and nurturing our culture of collaboration and inclusivity. In 2024, we welcomed:

- Internal Medicine Department Chair  
-Ravi Nayak, M.D.
- Dermatology Department Chair  
-M. Yadira Hurley, M.D..
- Molecular Microbiology and Immunology Chair  
-Richard DiPaolo, Ph.D

Seven new endowed faculty were named at the 2024 Investiture Ceremony, bringing the total to 43 (35 endowed chairs, 7 professorships, and 1 directorship).

# SPOTLIGHT

## MUSIC IN MEDICINE

SLU School of Medicine and the SLU Music Program of the Visual and Performing Arts Department hosted the 2nd Annual Gwendolyn Ruth Peiper Endowment for Music in Medicine event. Stephen C. Peiper, M.D. (Med '77) recognized the impact of music on wellness throughout his years at SLU School of Medicine, thanks to his mother Gwendolyn Peiper, a beloved piano teacher. In her honor, Dr. Peiper and his wife, Zi-Xuan Wang, Ph.D., honored Gwendolyn's legacy by donating pianos to SLU and establishing an endowment for a yearly event.



# IMAGE & REPUTATION

## GOAL

SLU School of Medicine will rise in national reputation, becoming known as a leader in medical education and scholarship and as a provider and employer of choice.

### NATIONALLY RANKED: 2024-2025 U.S. NEWS AND WORLD REPORT

SLU School of Medicine was recognized as a **Tier 1 Best Medical School for Primary Care** placing us in the top 15 medical schools.

This recognition is a significant milestone that aligns with our goal of training excellent clinicians for our region and beyond.

“This ranking not only elevates our status among peer institutions but enhances our ability to attract top-tier students, faculty, and research funding, reinforcing our role as a leader in medical education.” Dean Christine Jacobs, M.D.



## **SAINT LOUIS UNIVERSITY IS BECOMING AN R1 INSTITUTION**

The Carnegie R1 distinction is awarded to universities with a high level of research expenditures and which graduate high numbers of Ph.D students. Our investment in new investigators, attention to research operations, and significant growth in research expenditures are key contributors to this excellence.

## **POSITIONING THE SCHOOL OF MEDICINE AS A LEADER IN MEDICAL EDUCATION AND RESEARCH THROUGH OUR SOCIAL MEDIA PLATFORMS**

Our digital platforms showcase our achievements while highlighting the incredible work of our students, faculty, and staff. This increased visibility is attracting prospective students and faculty and strengthening our connections with alumni, partners, and the community.

Our followers and engagement increased in 2024, indicating our target audience is connecting with the content we share.

Saint Louis University is committed to making our web pages accessible to all who wish to use them. Our optimized web pages ensure a user-friendly experience for our disabled visitors.

# SPOTLIGHT

## PRIDE AND LEGACY: THE ALUMNI OF SLU SCHOOL OF MEDICINE

Our graduates carry with them a deep connection to their alma mater, reflecting on their time at SLU with fondness and gratitude. This bond is strengthened by the values, education, and experiences they gained during their formative years at the School of Medicine. In 2024, we celebrated the classes of 1964, 1969, 1974, 1979, 1984, 1989, 1994, 1999, 2004, 2009, 2014 and 2019, with more than 140 alumni and guests in attendance from across the U.S.



## ENGAGING OUR DONORS AND ALUMNI

Growing the number of White Coat Society members was a priority in 2024. The White Coat Society is granted to those who support the School with leadership gifts of \$2,500 or more each fiscal year.  
FY24: 194    FY23: 159



“It gives me great pride to be associated with such a fine institution that launched me on a career in medicine and a gratifying professional adventure.”

Geoffrey R. Weiss, M.D., Class of 1974

## RECONNECTING AND CELEBRATING: 2024 MED REUNION



54.9% WEBSITE ENGAGEMENT RATE  
1.3 MILLION WEBSITE PAGEVIEWS



SLU.EDU/MEDICINE



SAINT LOUIS UNIVERSITY  
SCHOOL OF MEDICINE



SLUSOM



SLU\_SOM



@SLUSOM



@SLUSOM

400+ YOUTUBE SUBSCRIBERS  
10% NEW FOLLOWERS ON LINKEDIN  
4.5% SOCIAL MEDIA ENGAGEMENT RATE  
(above industry average)



# WE WILL PRIORITIZE **THESE INITIATIVES** IN 2025

## Education

- Successful LCME re-accreditation
- Grow faculty development for transformative education
- Create a Graduate Studies office
- Open a MS in Medical Science post baccalaureate program
- Open a MS in Anesthesiology Assistant program
- Expand clinical training sites for medical students

## Leadership & Organization

- Recruit and retain strategic leaders
- Develop leadership competency model
- Implement a clinical faculty manual
- Fundraise for transformative excellence in education, facilities and research

## Research

- Grow funded research and clinical trials
- Hire research faculty in areas of excellence
- Strengthen capacity for innovation and external partnerships
- Strengthen research operations
- Strengthen the research cores
- Grow student research opportunities
- Revisit the SOM Research Compensation Plan

## Mission

- Create an Office of Ignatian Mission in Medicine
- Align mission-related activities across the SOM and the community
- Grow engagement of faculty and staff
- Strengthen student community engagement programs
- Develop pathways programs strategy



**SAINT LOUIS UNIVERSITY**<sup>™</sup>  
SCHOOL OF MEDICINE